

# Fusion

GMG 52"H Refrigerated Service Case

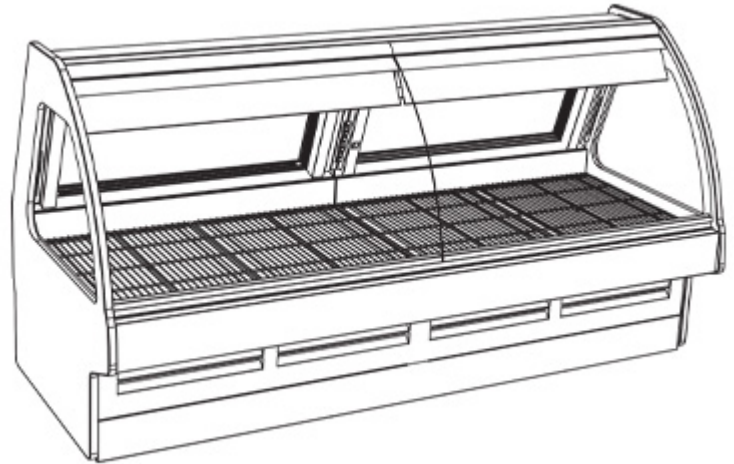
Structural Concepts®

(Lengths do not include 1-1/8" end panels)

- **GMG4** 48-3/4"L x 43"D x 51-5/8"H
- **GMG5** 60-5/8"L x 43"D x 51-5/8"H
- **GMG6** 73-1/8"L x 43"D x 51-5/8"H
- **GMG8** 97-1/2"L x 43"D x 51-5/8"H
- **GMG10** 121-1/8"L x 42-3/4"D x 51-5/8"H
- **GMG12** 146-1/4"L x 42-3/4"D x 51-5/8"H

## Included

- Gravity coil
- Integrated average product temperature of 40°F or less
- LED top light
- Lift-up front glass
- One year parts & labor; 5 year compressor warranty
- Stainless steel interior
- Stainless steel rear exterior



GMG8

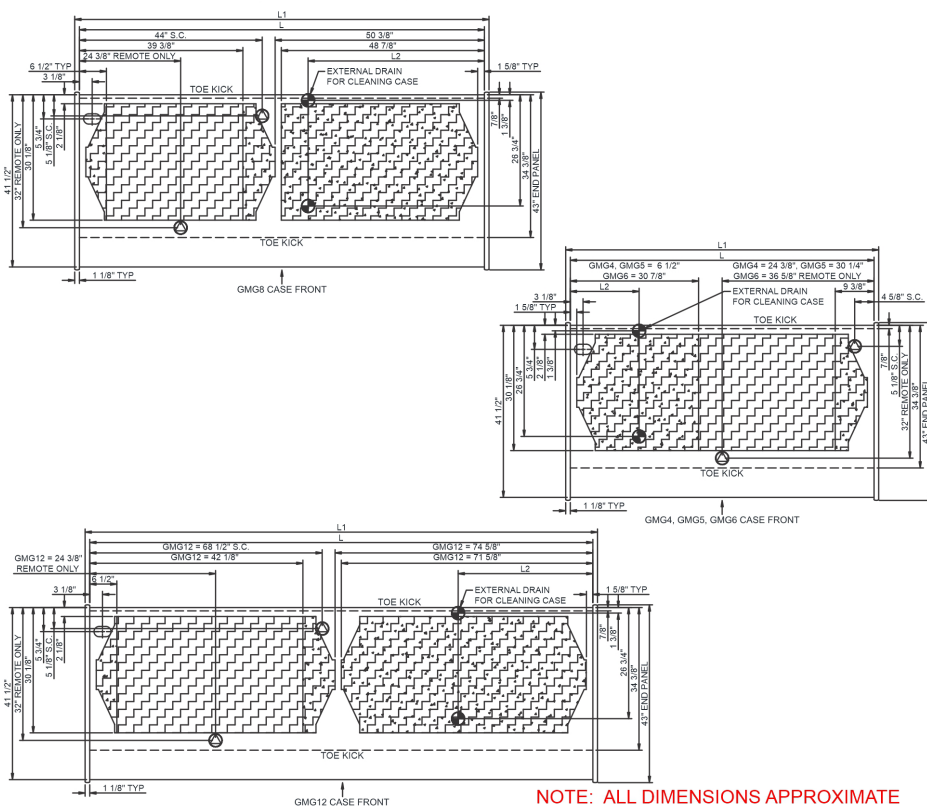
Specify	Standard Features	Additional Options
<b>EXTERIOR COLOR</b>	• Powder coated (stock colors, specify RAL#)	• Laminate - Standard colors • Stainless steel
<b>LOWER FRONT PANEL COLOR</b>	• Black powder coated	• Stainless steel
<b>TRIM COLOR</b>	• Black	• Silver
<b>BASE</b>	• Rail system for shims (remote)	• Casters w/ levelers (self-cont.)
<b>BUMPER FRONT</b>	• 1" Boston bumper (specify color)	• 1" Stainless steel plate rail bumper
<b>DISPLAY</b>	• Wire rack deck	• Ice pans, requires floor drain
<b>END PANELS</b>	• None (specify per line-up)	• Cutaway w/ glass (LH / RH) • End bumper (LH / RH) • Full w/stainless steel interior (LH / RH)
<b>FRONT GLASS</b>	• Curved	• Flat angled
<b>SCALE STAND</b>	• None	<sup>1</sup> • Scale stand w/ receptacle & CAT5 (specify location) <sup>2</sup> • Scale stand w/ receptacle (specify location)
<b>UPPER REAR</b>	• Clear glass rear sliding doors	• Reflective glass rear sliding doors
<b>LIGHTS</b>	• LED 4000K w/ frosted lens	
<b>ELECTRICAL CONNECT</b>	• Electrical leads (remote)	• 6' Locking power cord (self-cont.) • 6' Straight blade power cord (self-cont.)
<b>REFRIGERATION</b>	• Remote DX refrigeration	<sup>3</sup> • Breeze w/EnergyWise s/c refrigeration • Remote w/thermostat, solenoid & TXV
<b>SENSOR</b>	• None	• CPC discharge air sensor (remote) • Danfoss discharge air sensor (remote)
<b>MISCELLANEOUS</b>		• Front glass lock • Rear door lock
<b>ACCESSORIES</b>		• Clean Sweep® coil cleaner (n/a w/remote) • Drain strainer • Rear wrapping board, white Sanalite®

**Option Notes:** 1 - Separate circuit required  
2 - Separate circuit required  
3 - N/A on 10ft, 12ft

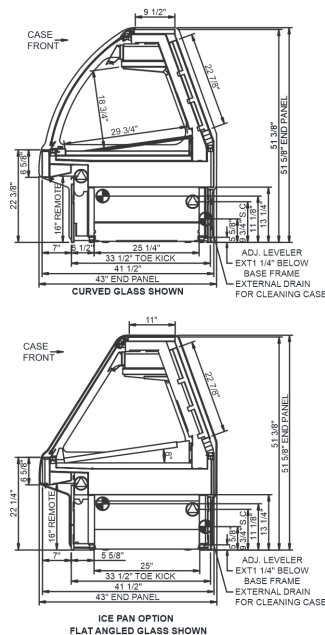
**Intended Environment:** Type I - Designed to operate in ambient conditions of 75°F with 55% relative humidity unless noted otherwise in system information below.

Zone	Intended Product To Be Displayed	Warmest Avg Prod Temp ° F
1	Unpackaged refrigerated products	38

PLAN VIEW



SIDE VIEW



NOTE: ALL DIMENSIONS APPROXIMATE

ELECTRICAL JUNCTION BOX (SUPPLIED WITH 6" LEADS OR POWER CORD).  
 LOCATION OF DRAIN TUBE FOR REMOTE REF. ONLY (SUPPLIED WITH 3/4" OR 1 1/2" PVC TUBE).

REFRIGERATION LINE CONNECTION.  
 REMOTE FLOOR SINK & UTILITIES ACCESS AREA.

SELF-CONTAINED CASE SERVICE ACCESS AREA.  
 DRY CASE SERVICE ACCESS AREA.

Model Technical Specifications																
Model	L"	L1"	L2"	System Circuit Volts			Phs	Freq	Amps ***	Watts	Wires	NEMA Plug	SST	Conv. Rack RTU/H	Para. Rack RTU/H	Est Wt
GMG4	48.75	51.00	13.38	Remote(Type I)	Circuit #1	110-120	1	60	1.23	124	2+G	Leads Multiple	18.00	1382	1280	1,100
				Self-Contained (R513A)	Circuit #1	110-120	1	60	10.43	798	2+G	5-20P or L5-20P	N/A	N/A	N/A	
				Self-Contained (R513A)	Circuit #1	110-120	1	60	10.12	769	2+G	5-20P or L5-20P	N/A	N/A	N/A	
GMG5	60.63	62.88	13.38	Remote(Type I)	Circuit #1	110-120	1	60	1.46	160	2+G	Leads Multiple	18.00	1728	1600	1,150
				Self-Contained (R513A)	Circuit #1	110-120	1	60	9.92	757	2+G	5-20P or L5-20P	N/A	N/A	N/A	
GMG6	73.13	75.38	16.38	Remote(Type I)	Circuit #1	110-120	1	60	1.46	160	2+G	Leads Multiple	18.00	2039	1888	1,200
				Self-Contained (R513A)	Circuit #1	110-120	1	60	9.92	762	2+G	5-20P or L5-20P	N/A	N/A	N/A	
GMG8	97.50	99.75	42.50	Remote(Type I)	Circuit #1	110-120	1	60	1.69	188	2+G	Leads Multiple	18.00	2722	2520	1,450
				Self-Contained (R513A)	Circuit #1	110-120	1	60	16.00	1,071	2+G	5-20P or L5-20P	N/A	N/A	N/A	
				Self-Contained (R513A)	Circuit #1	110-120	1	60	11.46	562	2+G	5-20P or L5-20P	N/A	N/A	N/A	
GMG10	121.13	123.38	.00	Remote(Type I)	Circuit #1	110-120	1	60	2.80	91	2+G	Leads Multiple	18.00	3404	3152	1,525
GMG12	146.25	148.50	.00	Remote Blower(Type I)	Circuit #1	110-120	1	60	5.10	155	2+G	Leads Multiple	20.00	4104	3800	1,600

\*\*\* Does not include electric defrost on freezer models.

**Regulatory Approvals:**

All Models  
Accordance with AHRI Std 1200  
ETL Listed to UL 471  
ETL Listed to CAN/CSA 22.2 No. 120  
ETL Sanitation to NSF/ANSI 7



In Accordance with  
**AHRI Std 1200**

**DOE 2017**  
Energy Efficiency  
Compliant

**Important Notes:**

- 1) ELECTRICAL NOTE: If GFCI is required, a GFCI breaker MUST be used in lieu of a GFCI receptacle.
- 2) 45" minimum door entry clearance required (without shipping skid).
- 3) Units must be shimmed during installation to ensure the unit is level and plumb"

**⚠ WARNING:** This product can expose you to chemicals, including Urethane (Ethyl Carbamate), which are known to the State of California to cause cancer and birth defects or other reproductive harm. For more information go to [www.P65Warnings.ca.gov](http://www.P65Warnings.ca.gov).